

YEAR 4 RESIDENTIAL

25th-27th March 2023

BEAUMANOR HALL



Where is Beaumanor Hall?

► Located in Leicestershire.

► The address is:

Beaumanor Hall,

Woodhouse

Leicestershire

LE12 8TX



Why are we going on a residential?

- ▶ To experience 2 nights away from home
- ▶ To provide opportunities for children to see and explore a different environment
- ▶ To improve self confidence
- ▶ To provide real life learning
- ▶ To immerse the children within the topic learning.
- ▶ To develop friendships

What do we expect?

- ▶ Adherence to and respect of the site rules
- ▶ Careful listening and following of all adult instructions
- ▶ No mobile phones or electronics
- ▶ Code of conduct – “3 strikes and home”

Code of conduct

- ▶ Listen to and follow instructions from school and Centre staff immediately.
- ▶ Do not enter any accommodation other than your own – this includes bedrooms occupied by others in our group.
- ▶ Do not use or climb on any of the activities or equipment without permission or enter any fenced areas or rooms that has been marked 'No Admittance'.
- ▶ All quiet between the hours of 10.00pm and 6.30am.
- ▶ Politeness and good manners must be shown at all times.

How do you/we get in contact if required?

- ▶ Contact details for every child will be held securely by visit leaders at Beaumanor and a copy held at school.
- ▶ Adults will have a mobile phone — school will have these numbers.
- ▶ Parents needing to contact a child in an emergency should first contact the school office.
- ▶ We will contact you if we are at all worried about anything.

What do we need from you?

- ▶ You will be given an information pack in January that will include all of the permission forms that you will need to complete these will include...
- ▶ Off-site parental consent form includes:
 - Contact details
 - Consent
 - Dietary requirements
 - Medical Information
- ▶ Code of conduct agreement

Please read the information sheet carefully with your child before completing the form

- ▶ Request for administration of medication by an adult — must be completed for any medication your child needs to bring.

On Monday 25th March...

- ▶ You will bring your child to the school hall from 8:15am
- ▶ Coach will leave at approximately 9:00am
- ▶ Money to be handed in - £5 in coins
- ▶ Medicine to be handed in.
- ▶ You will then say your goodbyes and leave the children with us and we will get them ready to board the bus.
- ▶ You are welcome to wait on Froxhill crescent (outside the school gates) to wave us off.

On Monday 25th March...

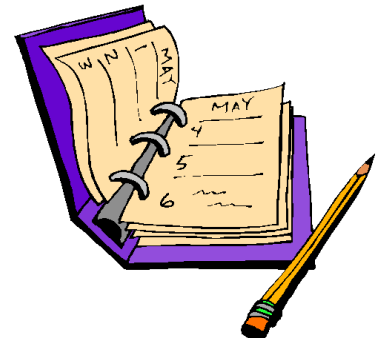
- ▶ Children will need to have taken their travel sickness tablet before they arrive, if they need one (and provide one for the return journey)
- ▶ All pupils need a healthy snack and a water bottle to have when we arrive before starting our first activity.

Beaumanor Hall



What will we be doing?

- ▶ A wide range of activities.
- ▶ The children will stay in their class groups.
- ▶ Each group will have adults from school and at least one instructor from the centre.

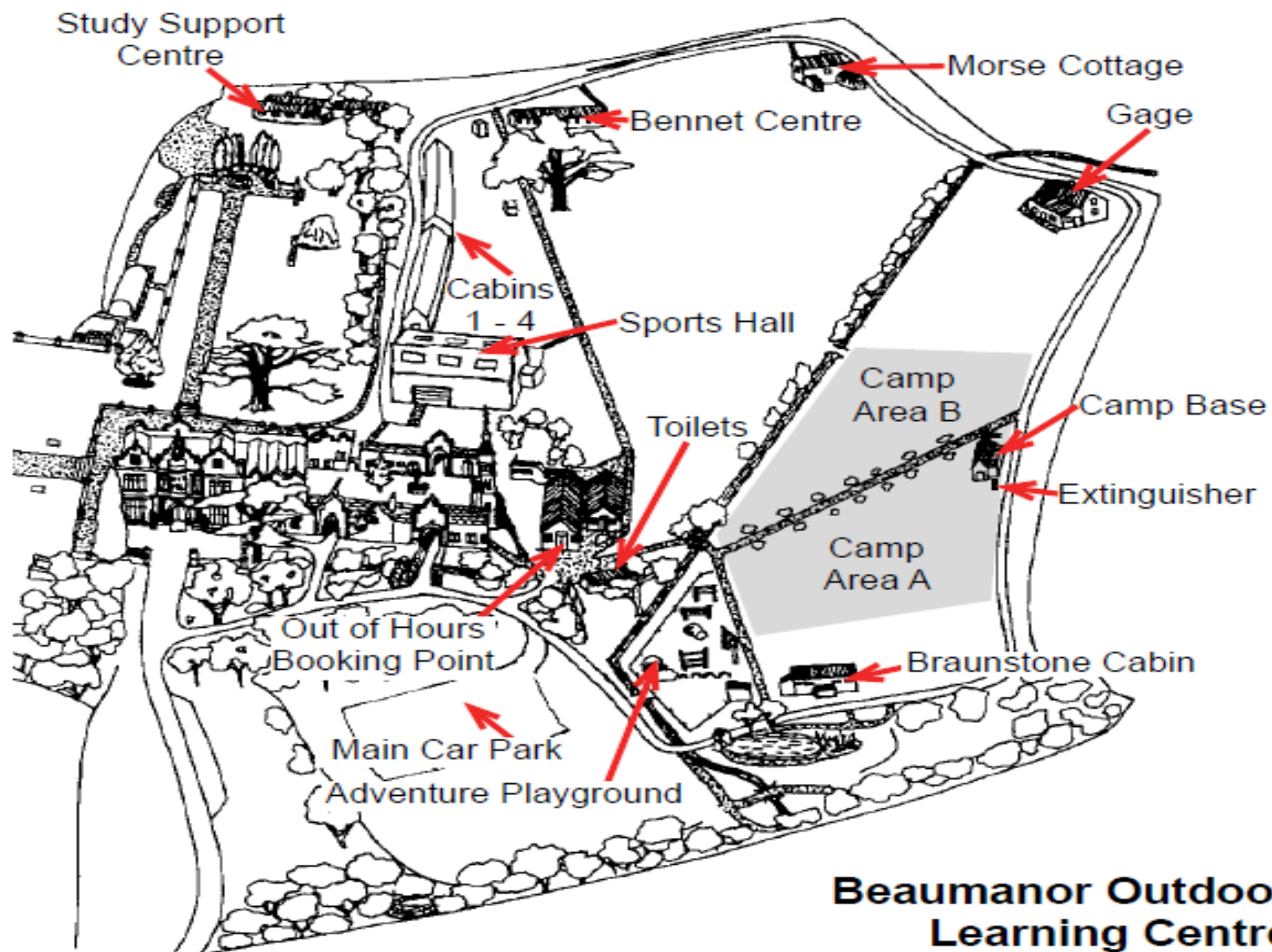


Activities

- ▶ Stone Age/Iron Age activities
- ▶ Bridge Building
- ▶ Building and driving land buggies
- ▶ Visiting the cellars and playing games
- ▶ Night line trail
- ▶ Team challenges
- ▶ Visiting the gift shop!!

Beaumanor Hall





Beaumanor Outdoor Learning Centre

NIGHTLINE

- Teamwork
- Trust
- Sensory exploration
- Communication
- Problem solving
- Fun



Land Buggies



- Problem Solving

Challenges

- Safety

- Teambuilding

- Life skills

- Knowledge

- Achievement



Evening activities

Hide and seek in the cellars



<u>Monday 25th March 2024</u>	Activity
10:00– 12:00	Arrive/Iron Age Celts
12:00 – 1:30	Lunch
1:30- 4:00	Iron Age Celts
5:30- 8:00	Evening meal Night Line Cellars
Groups will swap tomorrow night	

Wednesday 27th March 2024

7:30 Breakfast at the Main Hall An Instructor will meet you at the cabins	
9:30-12:00	Team Challenges
12:00-1:30	Lunch- the gift shop will be open should you wish to visit
1:30-2:00	Free time and depart

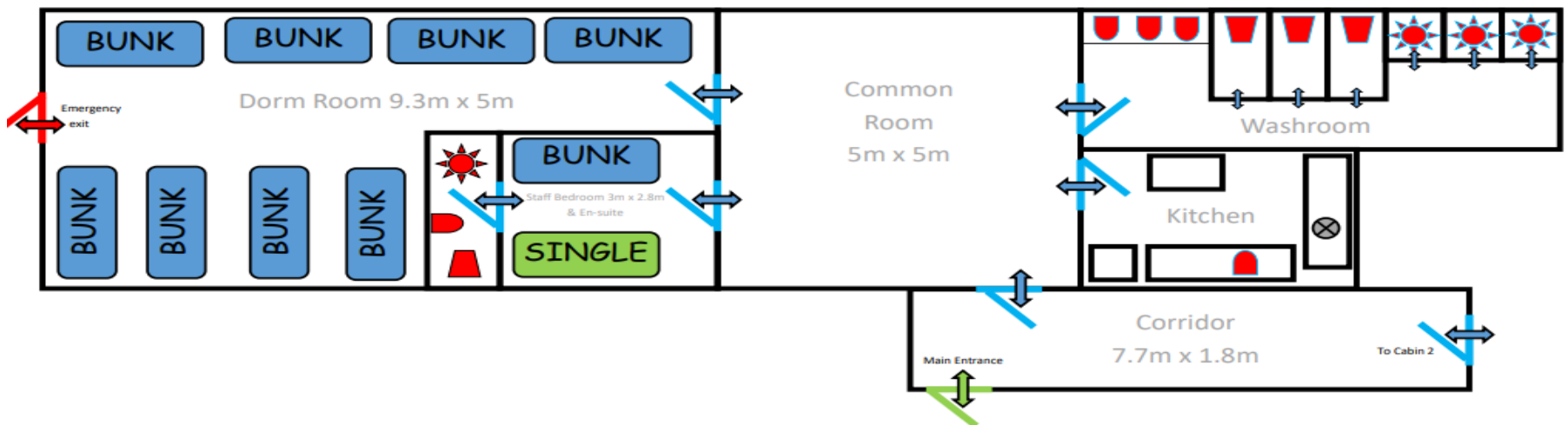
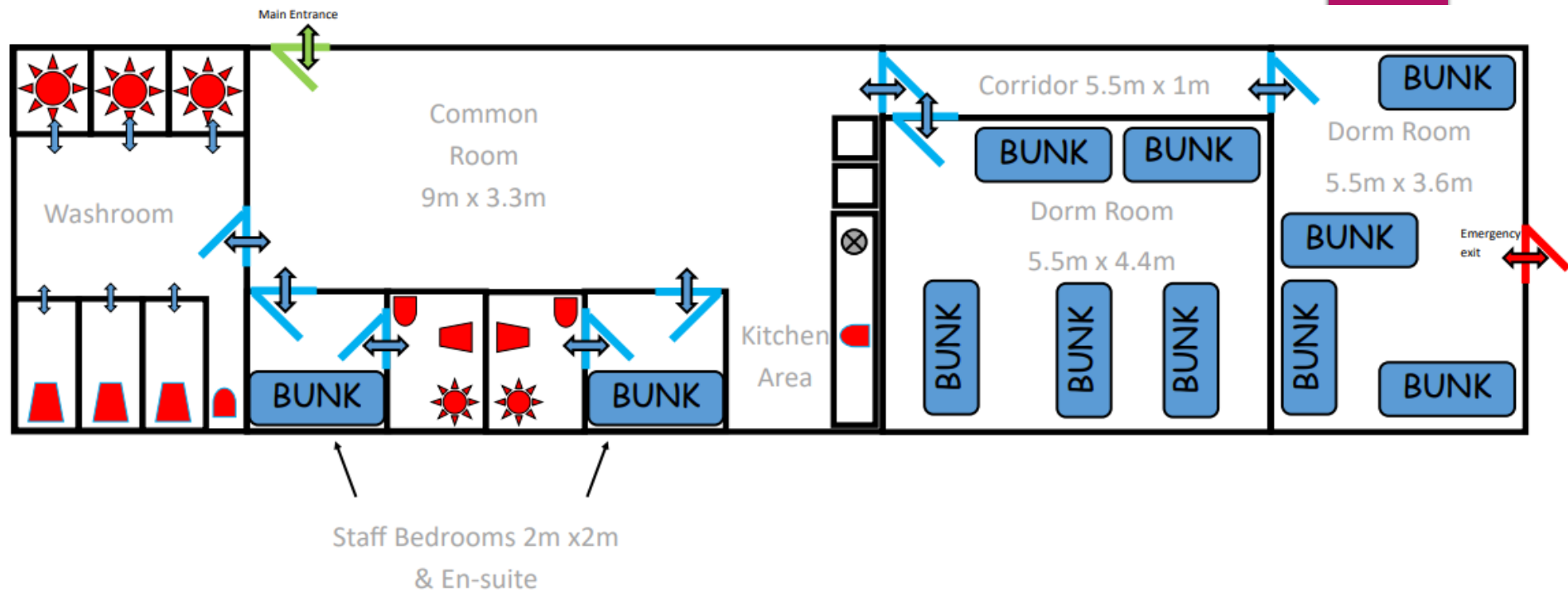
Tuesday 26th March 2024

7:30 Breakfast at Main Hall An Instructor will meet you at your cabins	
9:30 – 12:00	Land Buggies Bridge Building
12:00 – 1:30	Lunch
1:30-4.00	Land Buggies Bridge Building
5:30-8:00	Evening meal Cellars Night Line

Where will we be sleeping?

- ▶ Cabins have 16 beds (all bunk beds)
- ▶ Each cabin will have a staffroom with adults from school
- ▶ Accommodation is locked at night to the outside
- ▶ Children are only allowed in their **own** rooms
- ▶ Beds will be decided on arrival
- ▶ Each cabin has its own set of toilets and showers





Meals

- ▶ Dining room rules apply!
- ▶ Cooked breakfast
- ▶ 2 course meal in the evening
- ▶ Mixed seating
- ▶ Hot chocolate for bed time
- ▶ Packed lunch options



Mealtimes

Breakfast:



Cereals

Toast

Juice

Cooked breakfast



Lunch:

Sandwich

Cake

Fruit

Juice



Mealtimes

Evening meal

Meatballs and pasta/veggie

Chunky Fish fingers/Chips

Pizza(veggie)

Burgers

Jacket potatoes

Salad bar

Quiche

Flapjack/Ice cream/cookies





What do they need to take with them?

- ▶ See kit list in pack
- ▶ The older the clothes the better (a pair of old trainers is essential)
- ▶ Towel
- ▶ Travel sickness tablets
- ▶ Water bottle - named
- ▶ Money — no more than £5 in coins please
- ▶ Book or magazine; travel board games (no electrical toys)
- ▶ Name as much of kit as possible — list
- ▶ Luggage — suitable size and weight!
- ▶ Bin liner — for dirty clothes
- ▶ Small bag to use throughout week that will go on their back
- ▶ Blue inhaler to be kept by the class teacher (brown inhaler to be given to first aiders on Monday 25th March))

On our return....

Although we appreciate and understand your desperate desire to see your children again and to get them home and give them a big hug.....and a bath!

We ask you PLEASE to wait patiently **in the hall** for the children to join you. Once they have collected their luggage from the coach they will make their way to the hall.

We will arrive back at approximately 3:00pm



Cost!



Any Questions?